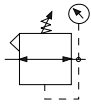
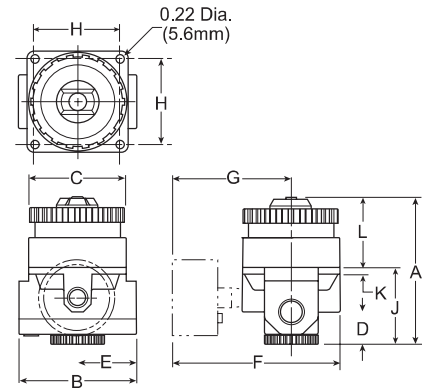


## 52R Dial Regulator – Relieving



### Features

- Balanced Poppet Design
- Non-rising, Pressure-adjusting Dial
- High-relief Flow (3/16" Relief Orifice)
- Two 1/4" Gauge Ports
- Piston Operated
- Flow Capacity: 1/4" – 117 SCFM<sup>§</sup>  
 3/8" – 180 SCFM<sup>§</sup>  
 1/2" – 195 SCFM<sup>§</sup>  
 3/4" – 220 SCFM<sup>§</sup>



Port Size	High Flow 5 to 160 PSIG (0,34 to 11 bar)	Low Pressure 2 to 40 PSIG (0,14 to 3 bar)
1/4"	<b>52R126RA</b>	<b>52R125RA</b>
3/8"	<b>52R226RA</b>	<b>52R225RA</b>
1/2"	<b>52R326RA</b>	<b>52R325RA</b>
3/4"	<b>52R426RA</b>	<b>52R425RA</b>

52R Regulator Dimensions				
A	B	C	D	E
4.10 (104)	3.20 (81)	2.60 (66)	0.95 (24)	1.60 (71)
F	G	H	J	K
4.30 (109)	2.70 (69)	2.20 (56)	2.08 (52.8)	.18 (4.6)
L				
2.07 (52.6)				

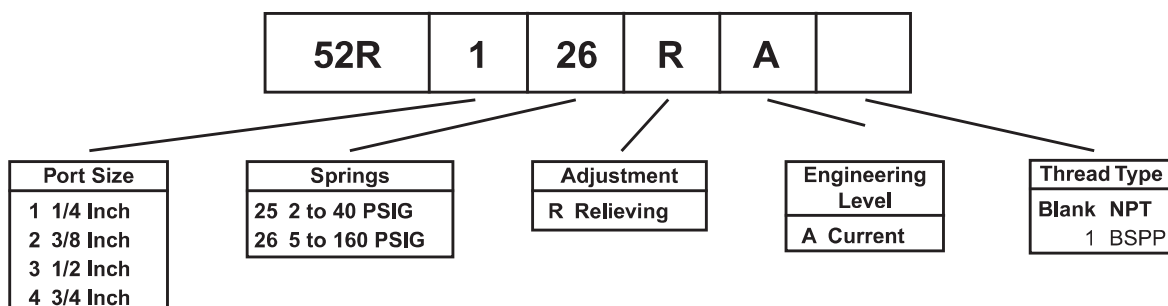
**Bold Items are Most Popular.**

For other models refer to ordering information below.

§ SCFM = Standard cubic feet per minute at 100 PSIG inlet, (1/4, 1/2 & 3/4) 90 PSIG, (3/8) 80 PSIG no flow secondary setting, and 25 PSIG pressure drop.

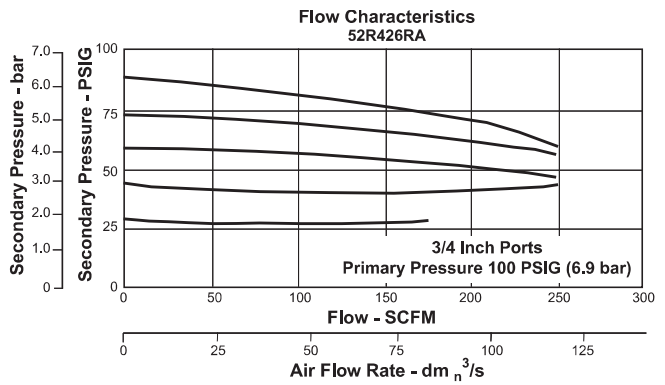
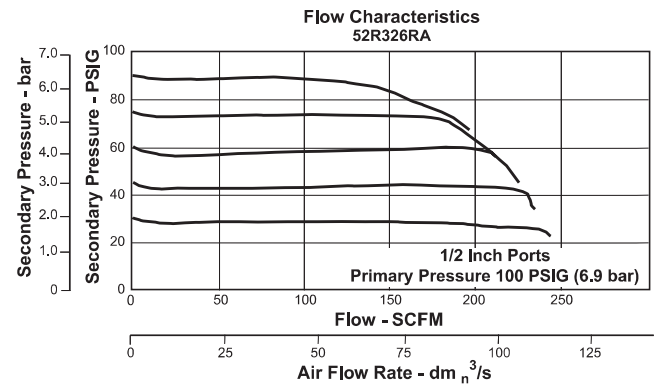
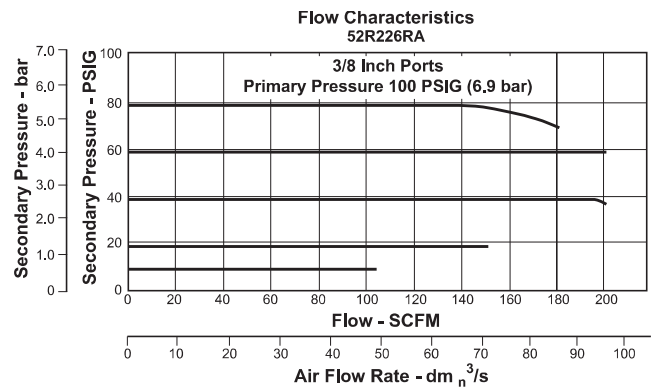
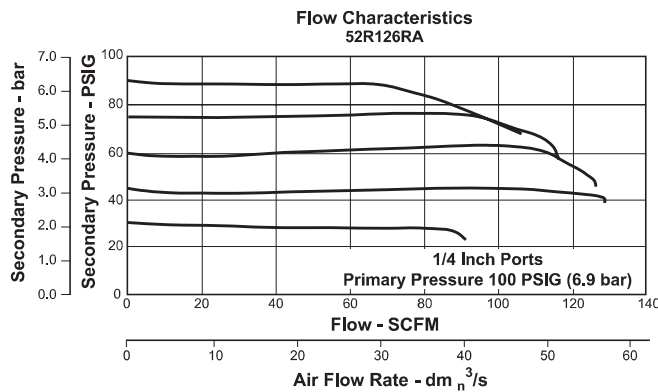
inches  
(mm)

## Ordering Information



**BOLD ITEMS ARE MOST POPULAR.**

**Technical Information**



**⚠ WARNING**

**Product rupture can cause serious injury.  
 Do not connect regulator to bottled gas.  
 Do not exceed maximum primary pressure rating.**

**⚠ CAUTION:**

**REGULATOR PRESSURE ADJUSTMENT** – The working range of knob adjustment is designed to permit outlet pressures within their full range. Pressure adjustment beyond this range is also possible because the knob is not a limiting device. This is a common characteristic of most industrial regulators, and limiting devices may be obtained only by special design. For best performance, regulated pressure should always be set by increasing the pressure up to the desired setting.

**52R Regulator Kits & Accessories**

Adjustment Dial Knob .....	RRP-16-024-80
O-ring, Repair Kit .....	GRP-95-260-80
Piston Bottom and O-ring Seal .....	RRP-95-192-80
Pistons and Bonnet Repair Kit .....	RRP-95-766-80
<b>Spring, Regulation, Belleville Washer</b>	
2 to 40 PSIG Range .....	RRP-95-906-80
5 to 160 PSIG Range .....	RRP-95-905-80
Tamper Resistant Kit .....	RRP-95-585-80
<b>Valve, Main with U-Cup Seal &amp; Bottom Plug .....</b>	<b>RRP-95-914-80</b>
<b>Valve, Main with U-Cup Seal .....</b>	<b>RRP-95-151-80</b>
<b>Valve, Pilot with O-ring and Valve Spring .....</b>	<b>RRP-96-934-80</b>

**Specifications**

<b>Adjusting Range Pressure .....</b>	<b>2 to 40 PSIG (14 to 276 kPa)</b> <b>5 to 160 PSIG (34 to 1103 kPa)</b>
<b>Bleed Rate .....</b>	<b>0.05 SCFM</b>
<b>Gauge Ports .....</b>	<b>Two Ports 1/4"</b> <b>(Can be used as additional High Flow 1/4 Inch Outlet Ports)</b>
<b>Maximum Operating Temperature .....</b>	<b>150°F (65.5°C)</b>
<b>Maximum Supply Pressure .....</b>	<b>300 PSIG (2068 kPa)</b>
<b>Port Threads .....</b>	<b>1/4", 3/8", 1/2", 3/4"</b>
<b>Weight .....</b>	<b>2.3 lb. (1.04 kg)</b>

**Materials of Construction**

<b>Body .....</b>	<b>Zinc</b>
<b>Bonnet .....</b>	<b>Zinc / Brass</b>
<b>Piston .....</b>	<b>Acetal</b>
<b>Seals .....</b>	<b>Nitrile</b>
<b>Springs .....</b>	<b>Steel</b>
<b>Valve Assembly .....</b>	<b>Brass / Nitrile / Acetal</b>